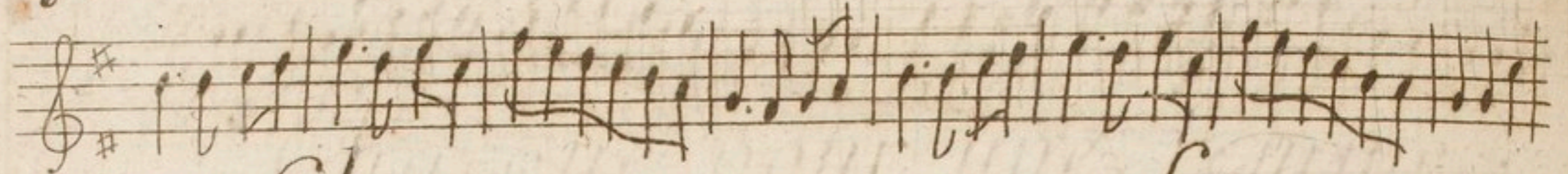
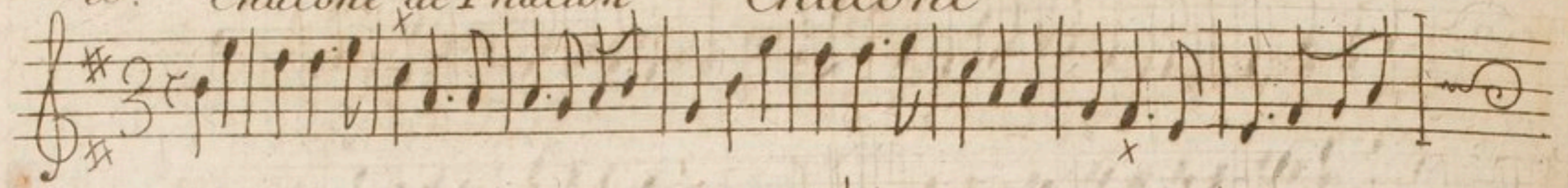


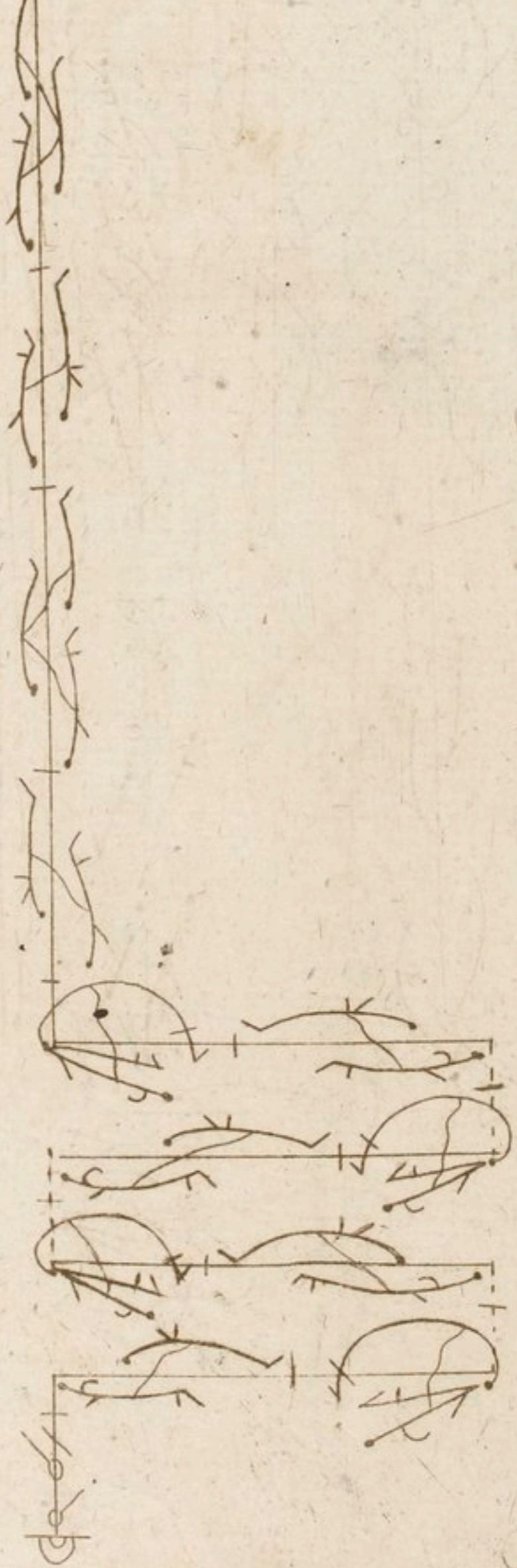
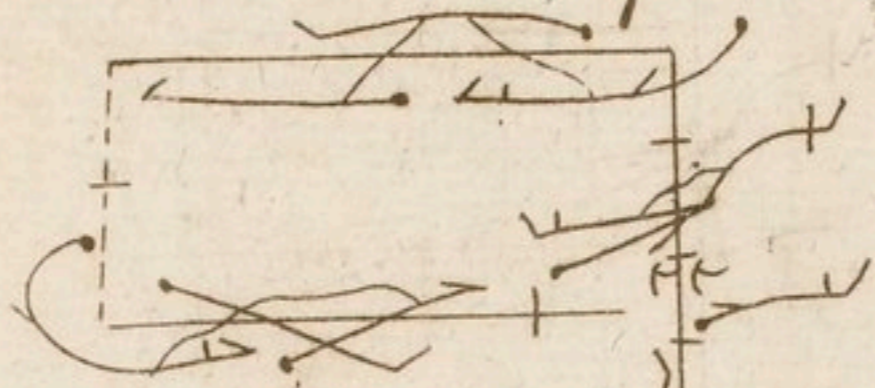
10.

*Chacone de Phaeton*

*Chacone*

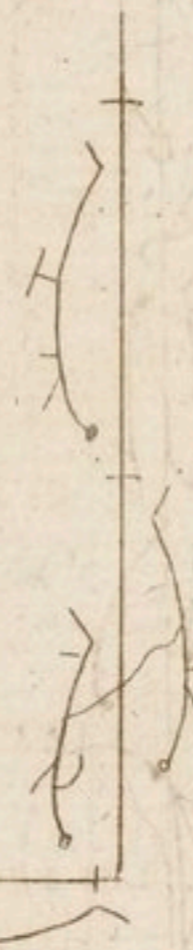
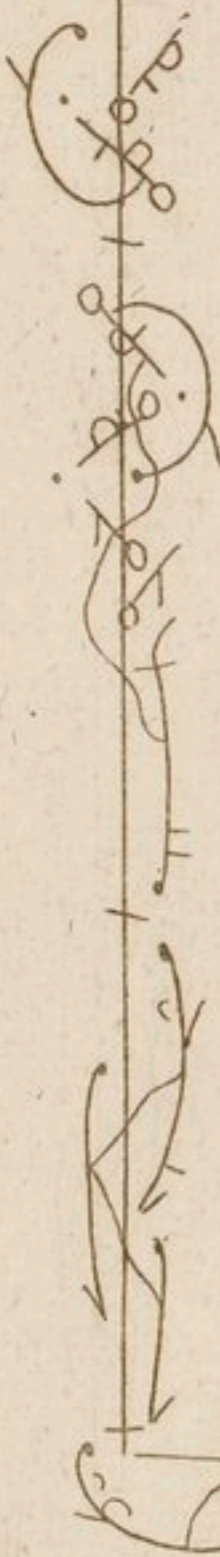
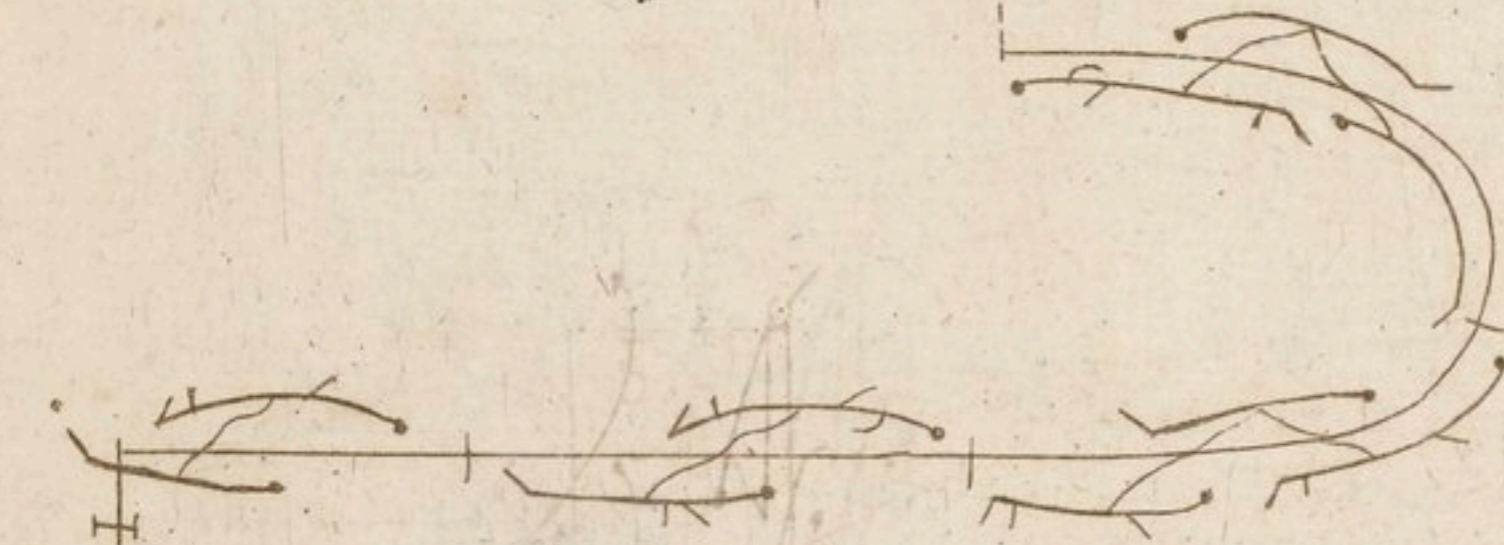
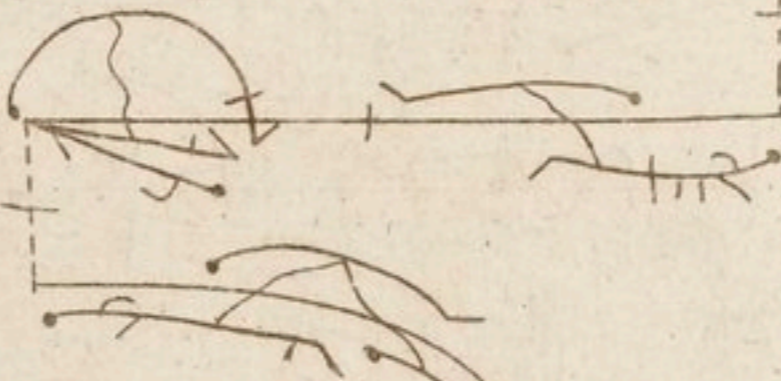
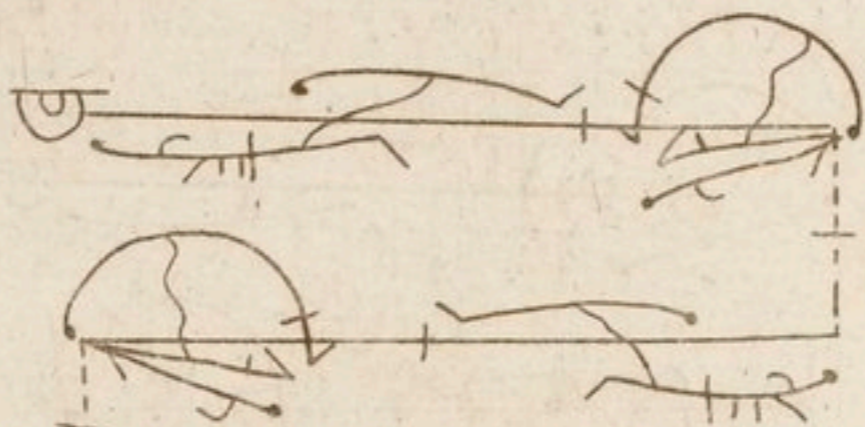
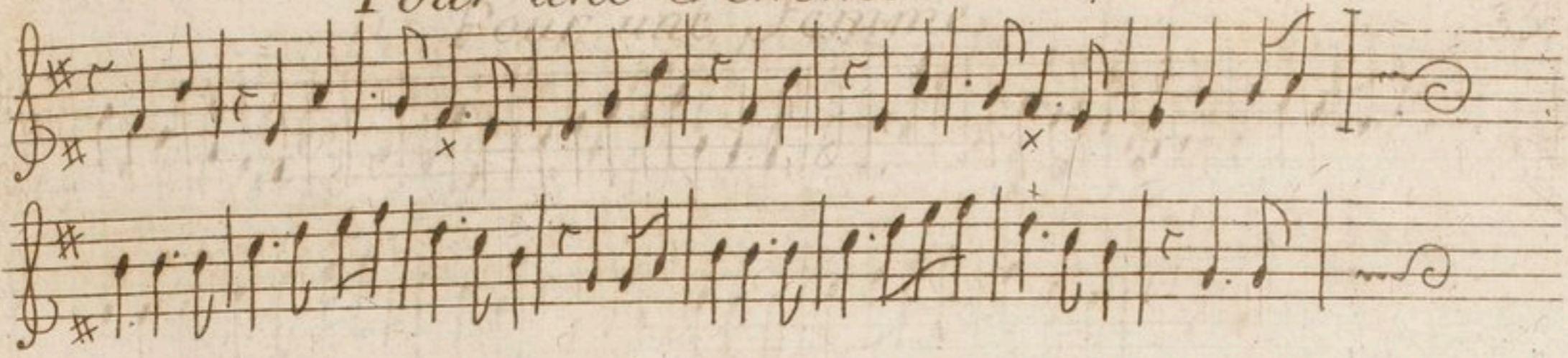


*Chacone pour une femme*



*Pour une femme*

11



Chaconne

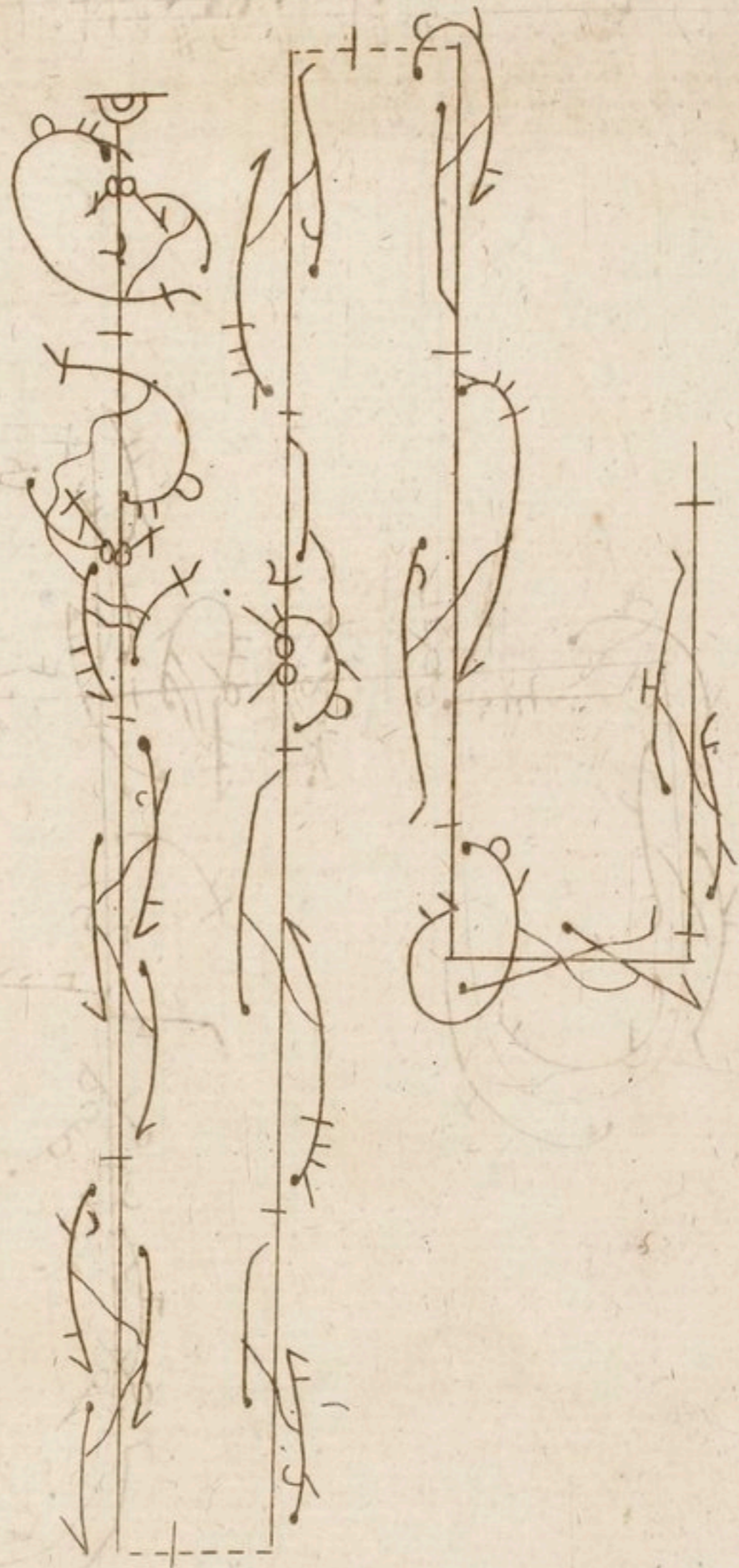
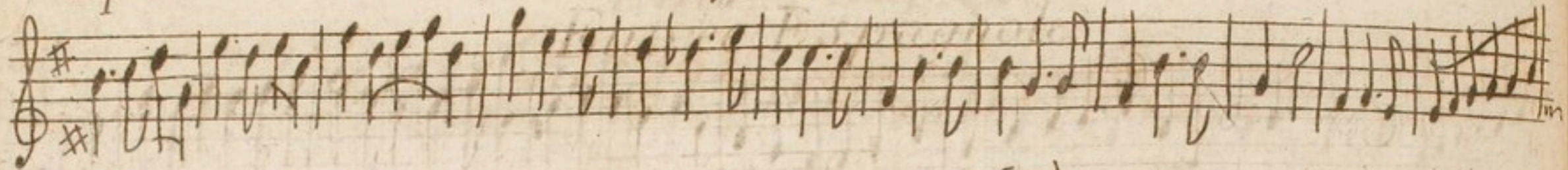
Two staves of handwritten musical notation. The top staff begins with a treble clef, a key signature of two sharps (F# and C#), and a common time signature (C). The melody consists of a series of eighth and sixteenth notes, with a double bar line and a fermata at the end. The bottom staff continues the melody with similar rhythmic patterns, also ending with a double bar line and a fermata. There are several 'x' marks written below the notes in both staves.

A large, intricate handwritten musical sketch or diagram. It features several horizontal lines with various musical notations, including notes, stems, and beams. The sketch is highly decorative and appears to be a conceptual or experimental piece of music, possibly related to the Chaconne above. It includes a large, curved line that loops back on itself, and several smaller, more complex figures. There are also some faint, illegible markings and symbols scattered throughout the sketch.

*Pour une femme*

13

# Chacone



Pour une Femme

15

Two staves of musical notation. The top staff is in treble clef and the bottom staff is in bass clef. Both are in G major (one sharp). The music consists of eighth and sixteenth notes, with a fermata at the end of the second staff.

A large, intricate handwritten diagram or musical sketch. It features a large, roughly circular shape on the left side, composed of multiple overlapping lines with small tick marks. To the right of this shape are several vertical lines, each containing musical notation, including notes, stems, and clefs. The overall appearance is that of a complex musical or lute tablature sketch.

Chaconne

16

Two staves of musical notation in G major. The top staff contains a melodic line with a treble clef and a key signature of one sharp (F#). The bottom staff contains a bass line with a bass clef and a key signature of one sharp (F#). Both staves end with a fermata.

A large, intricate handwritten musical sketch or study, possibly for a lute or guitar. It features complex rhythmic patterns and melodic lines, with many notes and rests. The sketch is written on a grid of lines and includes various musical symbols such as stems, beams, and accidentals. The overall style is highly detailed and expressive.

Handwritten text in the bottom left corner, possibly a signature or date.

*Pour une femme* x

C



Chaconne.

18

*Pour une femme*

